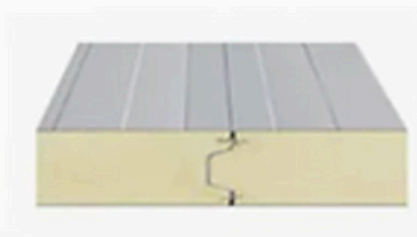
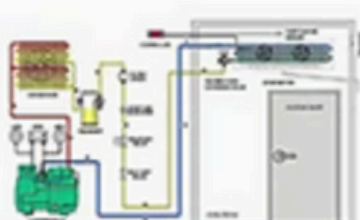
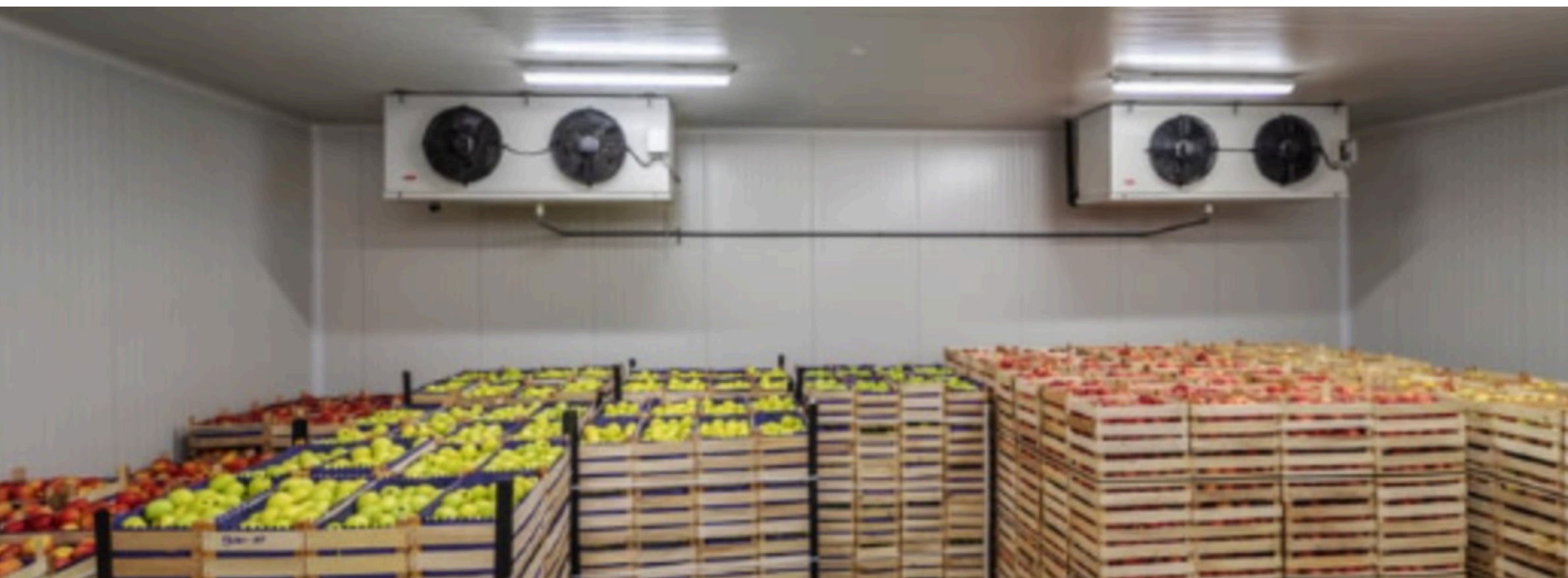


# Wedge India

## Cold Room & Mini Cold Storage



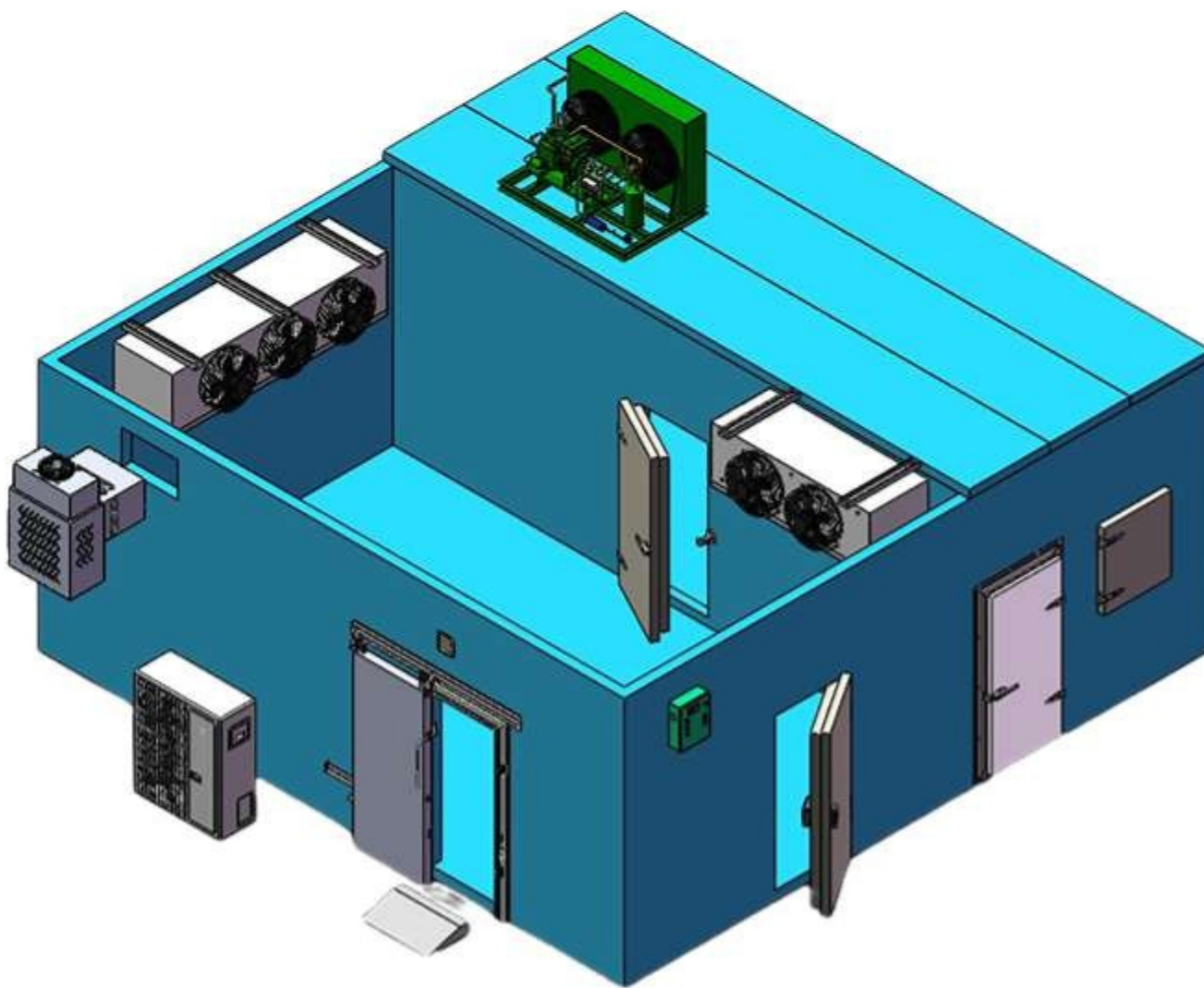


# 1.1

## Cold Room Modular Cold Room

As our most important product, cold room carries and displays our more than 20 years of industry experience. Our vision is Fresh Life With You Always! Therefore, we take the stability, efficiency, and ease of use of cold room as our goal. It also drives us to make continuous progress and make our products better. Now it is our honor to introduce our modular cold room to you, we provide the most professional one-stop cold room service.

### 01 Cold Room Parts



#### Insulation Parts

- Insulation panels
- Insulation doors

#### Refrigeration Parts

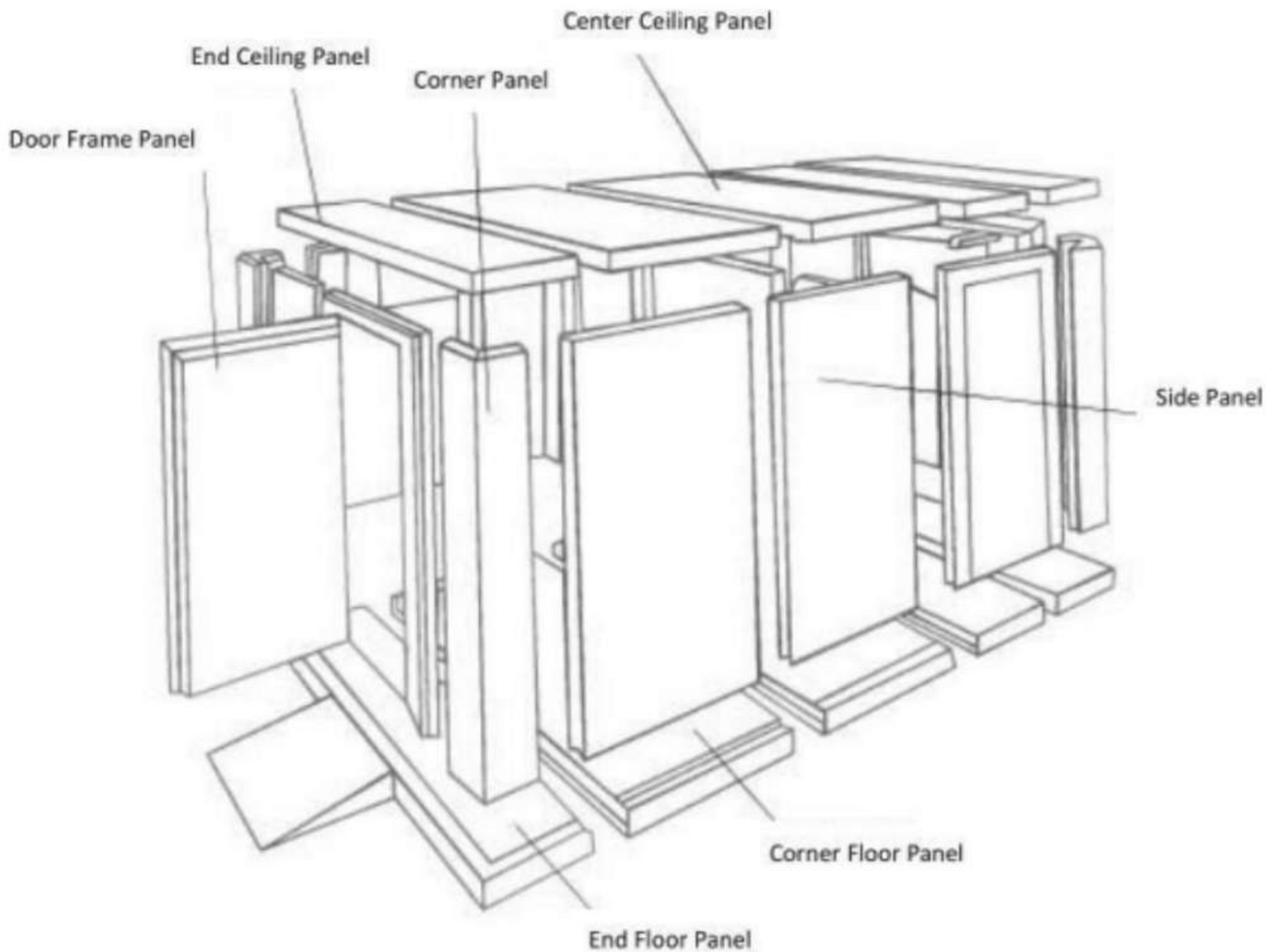
- Refrigeration units
- Evaporators

#### Accessories Parts

- Functional accessories
- Decorative accessories

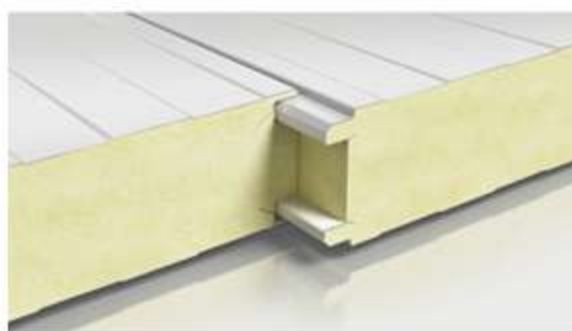


As an important part of the cold room, the thermal insulation part is one of the important guarantees for the long-term use of the cold room, and also affects the energy conservation and storage effect of the cold room.



## Insulation Panels

Wedge



Difference between PIR and PUR

Name	PIR	PUR
Raw material	Polyester polyol, higher isocyanate index (above 250), no or less flame retardant	Formulation system of polyether polyol, lower isocyanate index (about 110~120) and flame retardant
Thickness(mm)	75、100、120、150、200	75、100、120、150、200
Fireproof	B1	B2
Thermal Conductivity	$\leq 0.019 \text{ W/mK}$ (25°C)	$0.022 \sim 0.026 \text{ W/mK}$ (25°C)
Density	$45 \sim 50 \text{ kg/m}^3$	$40 \sim 45 \text{ kg/m}^3$
temperature range	' -196°C~+205°C	' -185°C~+110°C
Long-term continuous use range	$\leq +150^\circ\text{C}$	$\leq +85^\circ\text{C}$
water absorption	0.90%	2.5~3%
standard width	925mm、1125mm	customized
Connection type	Connect with glue and styrofoam, fix with rivets every 30-50cm, and fill the gap with glue after installation	Cam lock



## Hinged Door on Panel With Cam-lock

- The PU Panel is closely connected with the overall cold room, and the hinged door is pre-installed, which is integrated with the cold storage to ensure the tightness.
- Thickness of door: 75mm 100mm 120mm 150mm (According to your temperature)
- Door frame heating wire and sealing strip to guaranteed performance



## Other Types of Door



### Replaced Door

- Easy to install
- For replacement
- Customized size



### Sliding Door

- Manual or electronic
- Free entry and exit
- Customized size



### Swing Door

- Easy to in and out
- Stainless steel
- Customized size



## 03 Refrigeration Parts

As an important part of the cold room, the refrigeration system plays the most important role in the operation of the entire cold room.

It enables the cold room to store goods under preset conditions, it is the guarantee of the goods in the cold room, and for this we make stability and energy saving as the primary goal of the refrigeration units in our modular cold room!

We offer a choice of three refrigeration systems for our cold rooms, providing stable, energy-efficient refrigeration for different cold rooms.

### 1 Smart Packaged Unit



Our Smart Packaged Unit comes with following main features:

- Independent developed smart CDU(Condensing Unit) controller
- Advanced fuzzy controlled EXV module
- Intelligent hot-gas defrost on demand
- Condenser fan-speed controls
- Self-diagnosis function
- Intelligent alarm system





## 2 Condensing Unit With Evaporator

In addition to Smart Packaged Unit, which is very suitable for small cold rooms and intelligent control. We provide also different types of refrigeration unit support for different cold rooms and solution designs. No matter which one contains OnlyKem's more than ten years of refrigeration experience, it is stable, energy-efficient, and customizable.

- Horizontal Condensing Unit
- Vertical Condensing Unit
- Indoor Open Condensing Unit



- The brand of our condensing unit:



embraco

frascold®  
*Blue is better*

 Copeland Scroll

RefComp

In order to achieve the best cooling effect and meet different needs, our evaporators will be customized according to the needs of each project. In order to achieve the best cooling effect and user experience! Different materials, different shapes, different sizes, almost all parts can be customized. For each cold storage, we will provide the most suitable evaporator solution.



**Different Shapes**



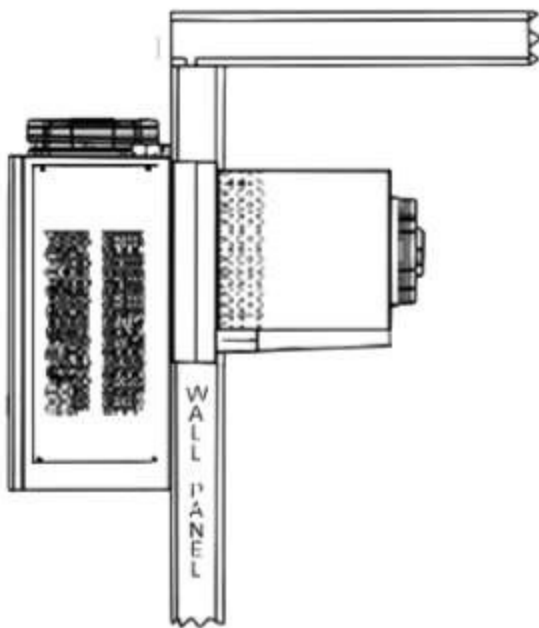
**Different Sizes**

Different evaporators have different usage scenarios. We provide detailed parameters of each fan, and use our expertise to select the most suitable fan solution for your project.



### 3 Monoblock Unit

We also provide monoblock unit, simple installation, small size, low cost of use and maintenance. It has been widely used in scenes with strict size requirements, such as kitchens, small mobile cold rooms, cold room trailers, etc.



- Pre-charged with refrigerant
- Hermetic compressor
- On/off electronic condensing control (in cooling and centrifugal)
- Progressive electronic condensing control (freez.)
- Capillary system for refrigerant expansion
- High and low-pressure control
- Automatic defrosting by hot gas
- System for partial evaporation of defrosting water
- Hot gas defrosting of drainpipe





In the use of cold room, accessories also play an important function. Some make the cold room more beautiful, some make the cold room more durable and more functional. Their quality and use are also very important.

OnlyKem knows this and takes action. We choose stable and energy-saving products in the accessories of cold room. We hope that our cold room can provide every customer with the most perfect experience to realize our vision: Fresh Life With You Always!

### Functional Accessories



#### Pressure Balance Window

- To keep inside/outside pressure to be balanceable.



#### PVC Curtain

- The size can be customized according to the size of door opening.
- To prevent indoor and outdoor air exchange



#### Ramp

- The size can be customized according to the size of the door opening
- It's convenient for trolley to enter and exit



#### LED Light

- Anti-explosion and low temperature resistance
- Reinforced glass and steel 9W/20W/50W for different needs





## Anti-Skidding Aluminum Plate

- Size: 1.2×2.4m, thickness is 3.0 mm
- To increase floor panel bearing capacity



## Glue

- For cold room panel insulation in connection
- 300ml/bottle, 24 bottles/box



## Switch

- Control heating wire of cold room door
- Control Led Light



## Mushroom bolt

- Used to solve the design problem of cold room
- Beautiful and supportive

## Decorative Accessories



## L-Shape Steel

- Cover exposed parts
- Make the cold room more beautiful



## Arc Aluminum

- To make the interior of the cold room neat and beautiful





**Singapore Fruit and Vegetable Cold Room Project**

- 40×20×6m
- Condensing unit with 40HP Bitzer
- Customized special design



**Cebu Logistic Cold Room Project**

- Logistic room
- Symmetric design
- OnlyKem provides the entire project



**Project on Vessel in Austrilia**

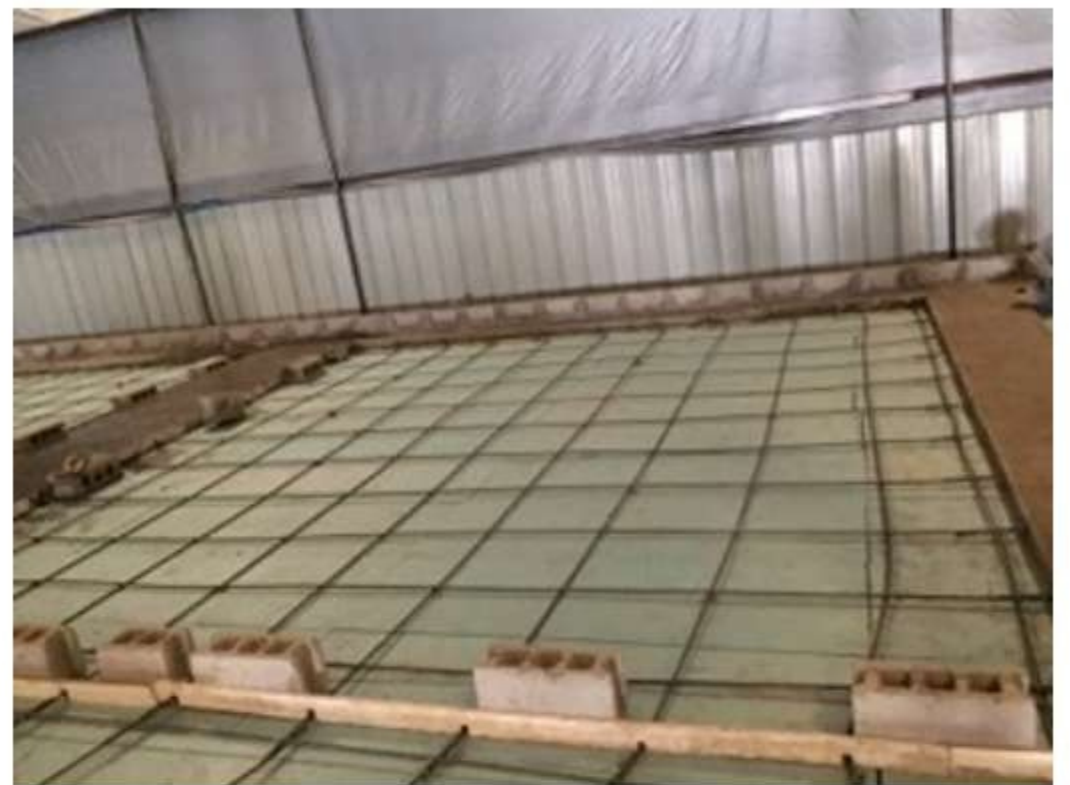
- Anti-rust
- Custom designed low screw and piston unit
- Special design



From obtaining drawings, design plans, manufacturing, installation guidance to final completion, it presents a high-standard and high-quality cold storage solution, and every step shows the extremely high level of OnlyKem.



**Product Packaging**



**Foundation Laying**



**Panel Installation**



**Sliding Door Installation**





Different vegetables and different fruits have different cold storage requirements. Taking fruits as an example:

Name	Temperature	Humidity (%)	O <sub>2</sub> (%)	CO <sub>2</sub> (%)
Apple	0°C	90~95	3	2~3
Pear	0°C	85~95	4~5	3~4
Cherry	0°C~ 2°C	90~95	1~3	10
Peach	-1°C~ 0°C	90~95	2	2~3
Banana	13°C~ 14°C	95	4~5	5~8
Carrot	1°C	85~90	3	5~7
Potato	3°C	85~90	3~5	2~3
Tomato	12°C	90	4~8	0~4

This is only a small part of the data we have accumulated. Each fruit has its own characteristics and requires corresponding temperature, humidity, oxygen concentration and carbon dioxide concentration to better keep fresh.

Our goal is not to keep it from going bad, but to keep it fresh! As our company slogan, Fresh Life With You Always! **Because we know that every customer who stores vegetables and fruits hopes that their fruits can be kept fresh and sold at a good price!**

With such harsh storage conditions, a stable and intelligent system and an excellent cold room design are essential! We also provide air-conditioning equipment for more demanding customers to better control the carbon dioxide and oxygen concentrations mentioned above.





# Wedge Group

Get Price

[info@wedge-india.com](mailto:info@wedge-india.com)  
[www.wedge-india.com](http://www.wedge-india.com)